

Here are the tools, materials, cut list, and build steps you'll need to construct your own garden trellis.



Garden Trellis



TOOLS

Table saw

Circular saw

Jig saw

Orbital sander

Drill/driver and bits

Tape Measure

Pencil

Sawhorses/worktable

Eye and ear protection

MATERIALS

(3) 2 in. x 4 in. x 8 ft. Cedar

(4) 4 in. x 4 in. x 8 ft. Cedar posts

(2) 2 in. x 8 in. x 8 ft. Cedar
(for the corbels)

(1) 2 in. x 6 in. x 6 ft. Cedar
(side bracket/beam support)

(2) 2 in. x 6 in. x 10 ft. Cedar
beams

(4) Post Brackets
(optional, to attach to
wood deck)

2 ½ in. Deck Screws

1 ¼ in. Deck Screws

Wood Stain

Wood Sealer

Wood Glue



PARTS PREPERATION

Rip and Cut Trellis Pieces—Rip the 2 in. x 4 in. x 8 ft. pieces down to 1 ½ in. x 1 ½ in. x 8 ft. on the table saw for the top trellis pieces. Then, rip the boards being used to make the 1 in. x 1 ½ in. x 60 in. long middle trellis boards, 1 in. x 1 ½ in. x 48 in. short side trellis boards, and 1 in. x 1 ½ in. x 16 in. trellis brackets down to thinner 1 in. widths. Then cut all pieces to length according to the dimensions and cut list.

CUT LIST

SIDES

Make the following cuts with the 4 in. x 4 in. x 8 ft. posts, ripped 2 in. x 4 in. x 8 ft. boards, and 2 in. x 6 in. x 6 ft. board:

- (4) 3 ½ in. x 3 ½ in. x 96 in. posts
- (2) 1 in. x 1 ½ in. x 60 in. long middle trellis boards
- (4) 1 in. x 1 ½ in. x 48 in. short side trellis boards
- (4) 1 in. x 1 ½ in. x 16 in. trellis brackets
- (2) 1 ½ in. x 5 ½ in. x 36 in. top side brackets

TOP TRELLIS AND CORBELS

Make the following cuts with the 2 in. x 6 in. x 10 ft. boards, ripped 2 in. x 4 in. x 8 ft. boards, and 2 in. x 8 in. x 8 ft. boards:

- (2) 1 ½ in. x 5 ½ in. x 120 in. beams (with shaped ends, see step 2a below)
- (11) 1 ½ in. x 1 ½ in. x 24 in. top trellis boards
- (4) 1 ¼ in. x 7 ½ in. x 32 in. corbels (see step 4 for cut details)

GARDENTRELLIS BUILD STEPS

1. Side Sections

- a. Take two 1 in. x 1 ½ in. x 16 in. trellis brackets and lay parallel to each other, spaced 36 in. apart.
- b. Lay 1 in. x 1 ½ in. x 60 in. middle trellis board across two trellis brackets perpendicularly, centered on each bracket. Secure to trellis brackets using 1 ¼ in. deck screws.
- c. Take two 1 in. x 1 ½ in. x 48 in. short side trellis boards and lay parallel to both sides of the middle trellis board, on top of the brackets, each spaced approximately 1 ½ in. from the middle trellis board. Secure to brackets using 1 ¼ in. deck screws. Set aside.
- d. Attach one 1 ½ in. x 5 ½ in. x 36 in. top side bracket to two 3 ½ in. x 3 ½ in. x 96 in. posts using 2 ½ in. deck screws, making sure the bracket is 5 ½ in. from the top of the two posts and the legs are spaced 19 in. from each outside edge.
- e. Attach the side trellis built in steps 1a through 1c to the side posts using 2 ½ in. screws, making sure the side trellis is running parallel to the posts and the edge of the middle trellis board is 12 ¼ in. from the edge of the posts (opposite the side the bracket was attached).
- f. Repeat steps 1a through 1c for the other trellis side.

Steps 1a-1c



Step 1d



Step 1e





2. Assemble the Top Trellis Section

- Copy the attached template or sketch out your desired pattern on card stock. Cut out pattern and transfer on the ends of the two 2 in. x 6 in. x 10 ft. beams. Cut out shape with jigsaw, then sand down the cuts, and rip to specified dimensions above. *See appendix A for the trellis end template.*
- Lay out the two now 1 ½ in. x 5 ½ in. x 120 in. beams parallel to each other, shaped ends face down, leaving 19 in. of space in-between.
- Predrill holes on each end of the eleven 1 ½ in. x 1 ½ in. x 24 in. top trellis boards, 1 in. from the ends.
- Lay the top trellis boards perpendicularly across the beams, with 7 ⅞ in. between each board, and the two outermost boards 16 in. from the end of the beams.
- Secure the boards to the beams with 2 ½ in. deck screws.

Step 2a



Step 2b



Step 2c-2e



3. Attach Top and Sides of Garden Trellis

- a. Lay the top and side sections on their sides. Square the sections with one another and drive two 2 ½ in. screws through the front beam into the post at the location shown below, making sure the side sections are facing outward and located 16 in. from the ends of the top trellis section (measured from the side of the top side bracket).
- b. Screw each end to the top on one side, and stand up the structure, screwing in the other side, making sure everything is square and flush.

Step 3a

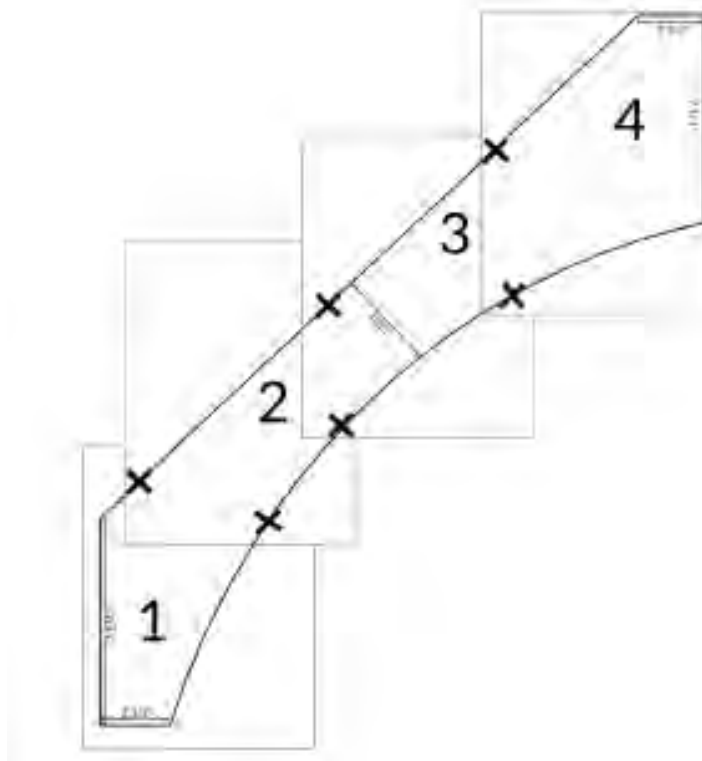


Step 3b



4. Corbel Build Steps

- Used the attached template and trace it on 1 ½ in. x 7 ¼ in. x 32 in. corbel piece. *See Appendix B for Corbel Template.*
- Make cuts along the template lines with jigsaw.
- Repeat steps 4a and 4b for the other three corbels.



Step 4b



Step 4c





5. Attach Corbels

- a. Grab one of the 4 corbels, and line up flush with the side post, making sure the bottom of the corbel is 70 ½ in. from the bottom of the structure. Double check that the corbel is flush with the interior of the top beam and affix them together, driving a 2 ½ in. screw through the corbel.
- b. Predrill a hole at an angle in the bottom of the corbel and attach to the side post with a 2 ½ in. deck screw.
- c. Repeat steps 5a and 5b with the other 3 corbels.

6. Apply wood sealer, and stain or paint (if desired).

Step 5a

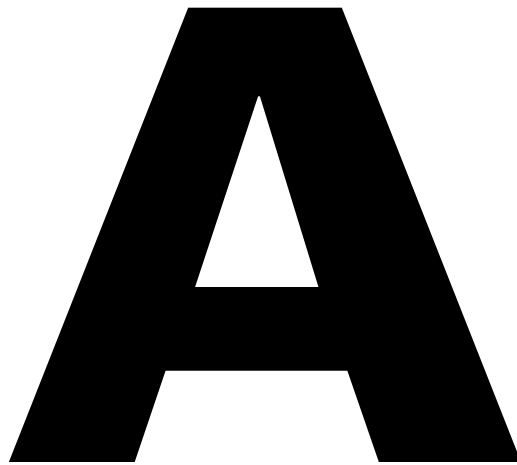


Step 5b



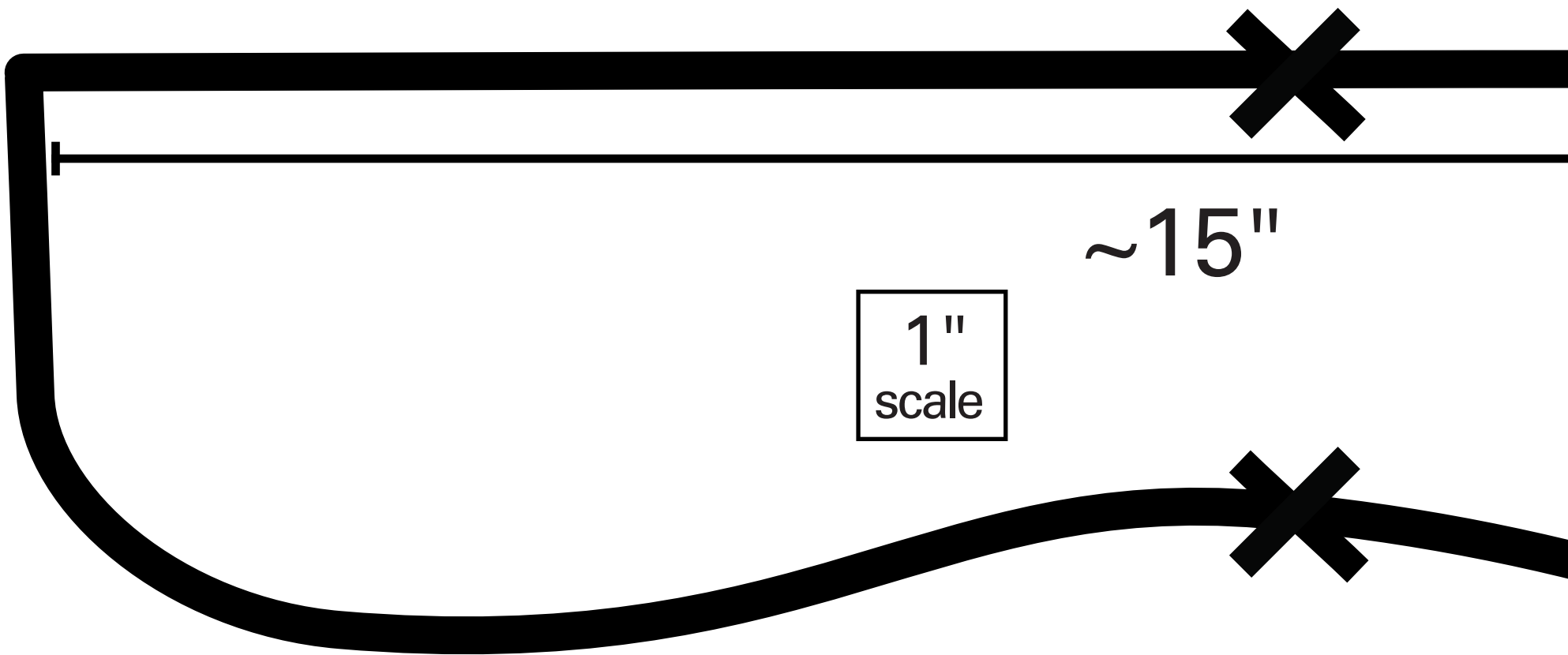


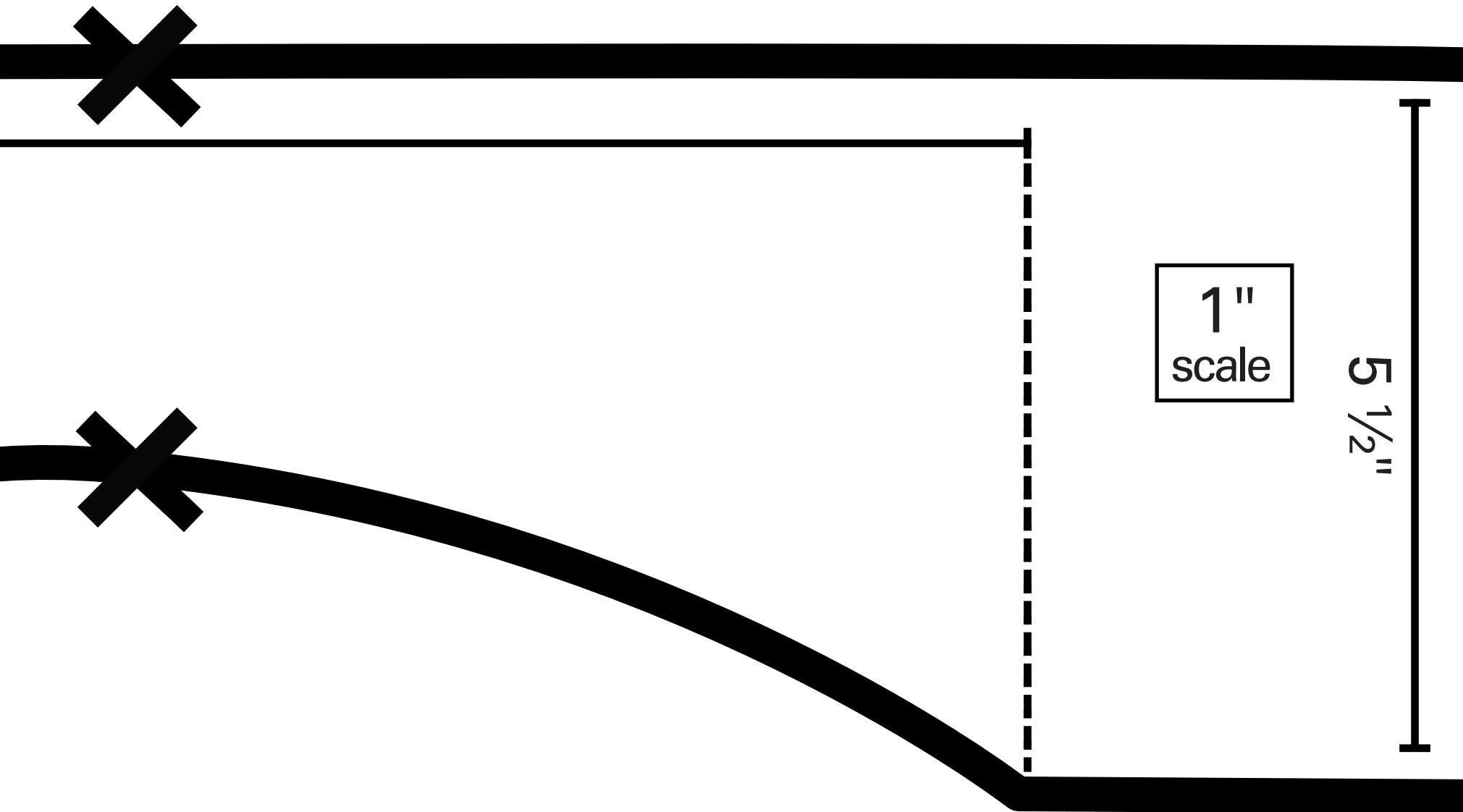
APPENDIX



Trellis End Template

1. Print pages at "Actual Size" in print settings.
2. Overlap along the thick hash marks and tape together.
3. Cut out template.





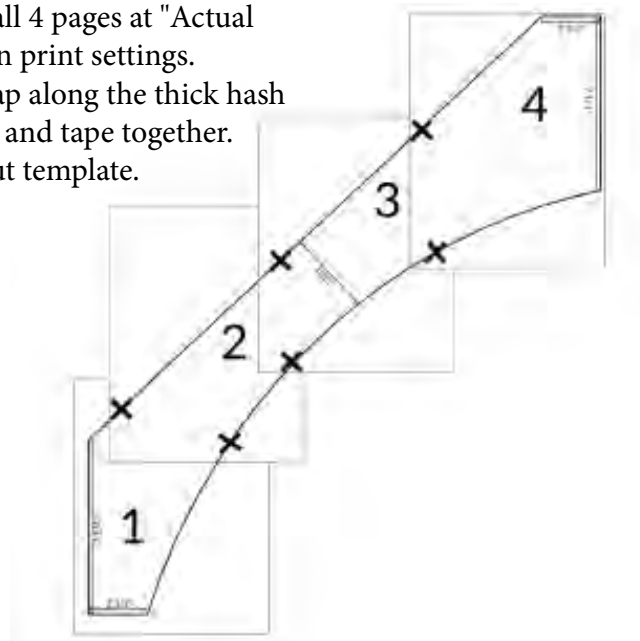


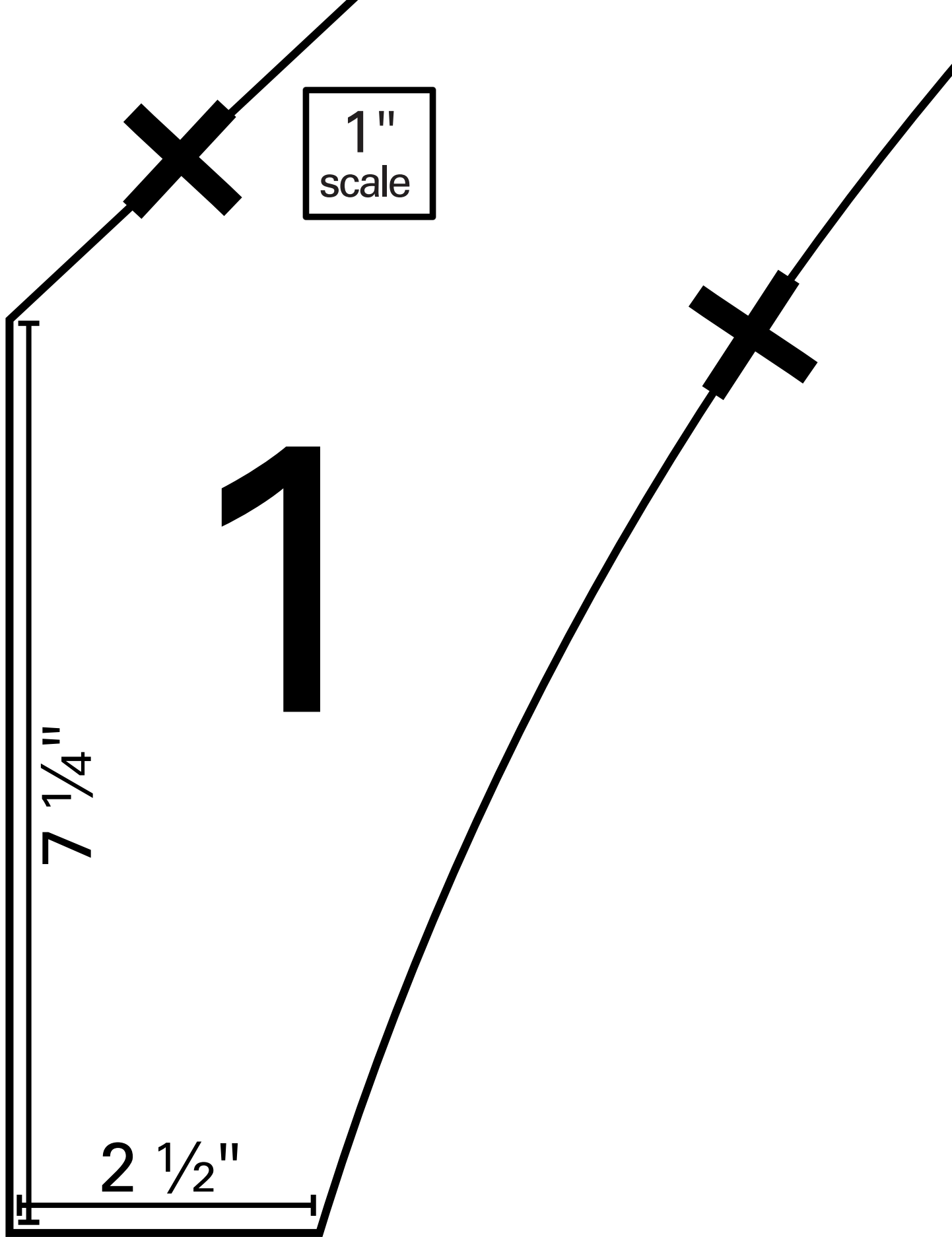
APPENDIX

B

Corbel Template

1. Print all 4 pages at "Actual Size" in print settings.
2. Overlap along the thick hash marks and tape together.
3. Cut out template.



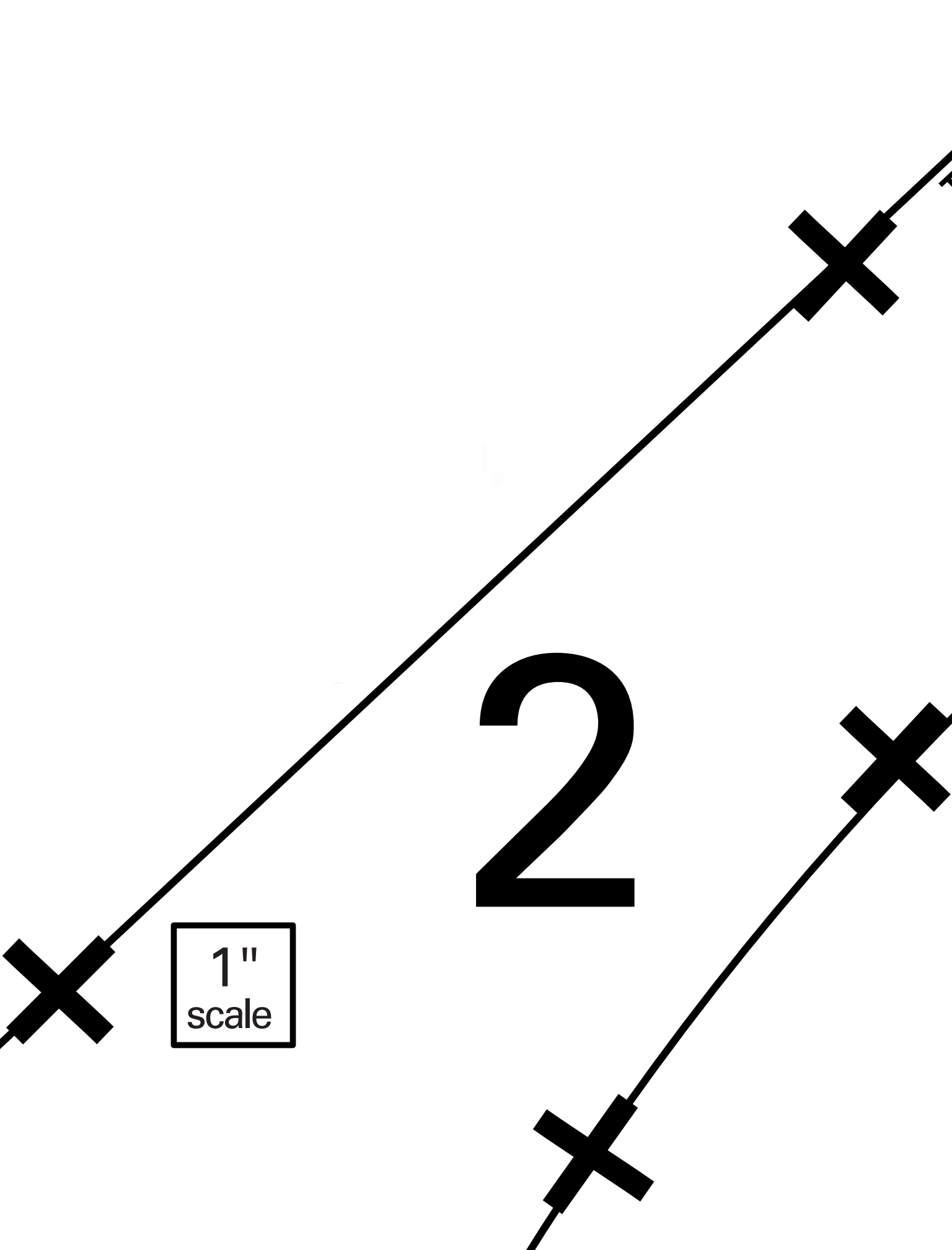


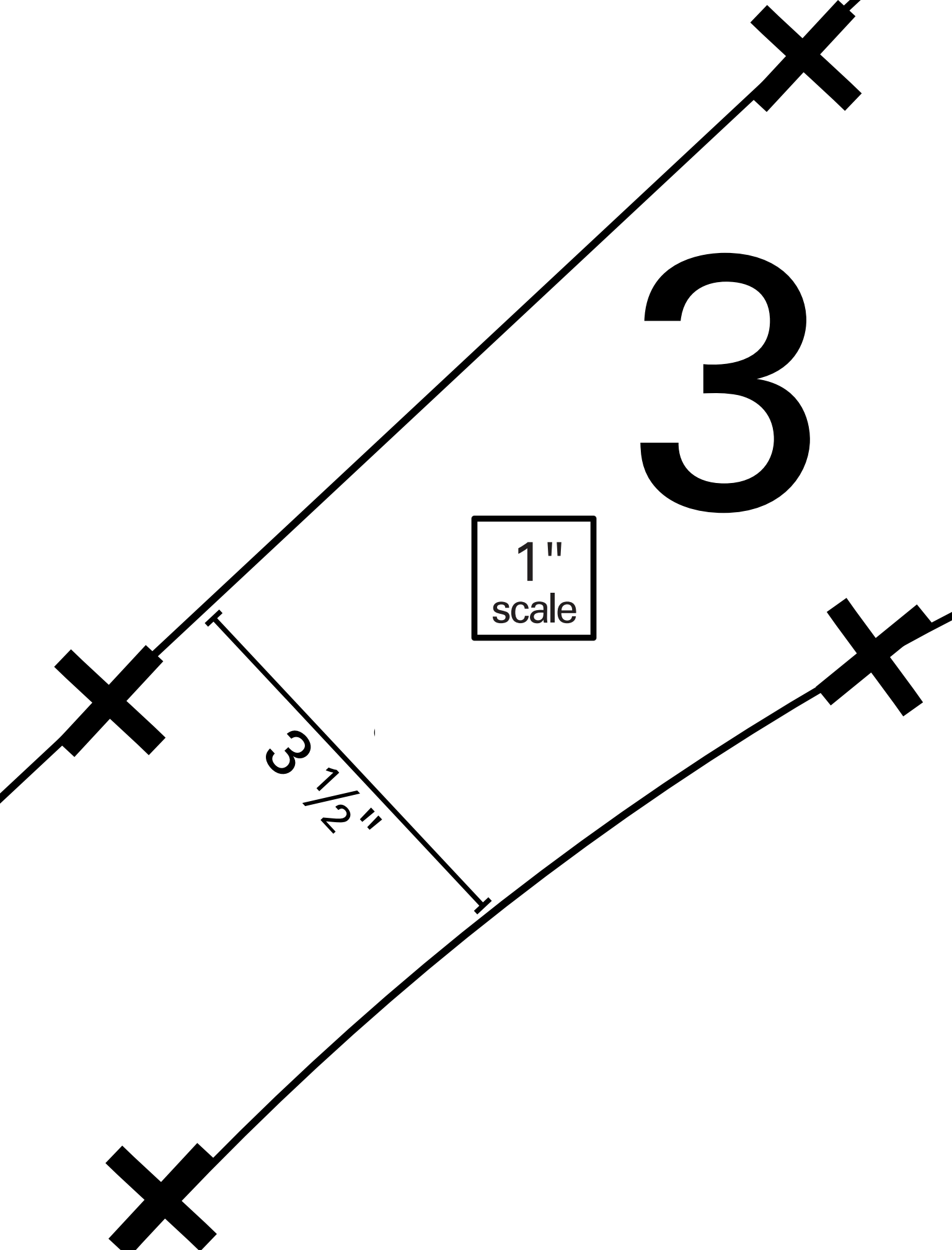
1"
scale

1

$7 \frac{1}{4}"$

$2 \frac{1}{2}"$





3

1"
scale

$3\frac{1}{2}$ "

